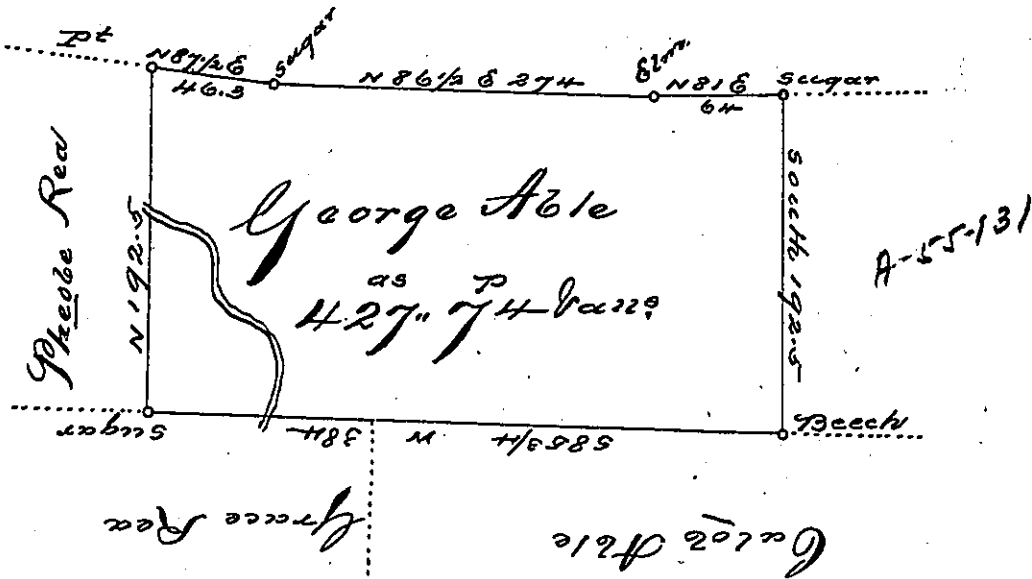
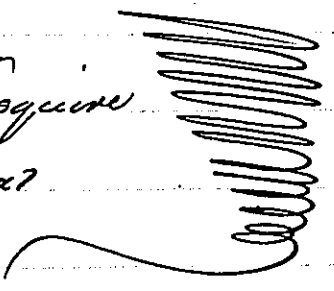


Gas. Lyamble



Situate in District No. 6, North and West of the Ohio and Allegheny Rivers,
 an Connewang Creek in the County of Allegheny, Containing four hundred
 and twenty seven acres, seventy four perches and allowance of six per cent
 Surveyed October the 3^d 1799, By order of Resurvey of the 16th of May
 1799, and on a Warrant granted to George Able dated the 10th of April
 1793.

To Daniel Brodhead Esquire
 Surveyor General



Alexander McDowell Jr.

SB

IN TESTIMONY that the above is a copy of the original remaining on file in
 the Department of Internal Affairs of Pennsylvania, made
 conformably to an Act of Assembly approved the 16th day of
 February, 1833, I have hereunto set my Hand and caused
 the Seal of said Department to be affixed at Harrisburg,
 this second day of May, 1899.

James W. Latta
 Secretary of Internal Affairs.